



MAKE OUR HOMES YOUR SCHOOL



## Sunday 21<sup>st</sup> June to Saturday 29<sup>th</sup> August 2020

### *Total Immersion in the English Language*

Learn English successfully, intensively and rapidly by living and studying with your teacher.

You will be welcomed into your teacher's home where you will experience life in the UK as part of a warm, friendly family. You will speak only English every day and your teacher will help you find the right words in daily conversation. Your course is specifically designed to meet your needs for learning English.

### *Summer 2:1*

Choose a Summer 2:1 course and we can match you with a student of a different nationality or first language. Your language learning partner will be carefully selected to match your age, interests and general level of English. This is an excellent opportunity to share your course and to make a new friend from another country.

In the unusual situation that we don't find a suitable partner for you after you have booked your Summer 2:1 course, you will be upgraded to a 1:1 course for no extra fees.

Students on a Summer 2:1 course may share a bedroom with their partner.

Summer 2:1 courses are General English courses. If you have a specific individual requirement for your course e.g. exam preparation, advanced English, or private sports lessons, please book a 1:1 course.

### *Summer 2:1 fees per person (ages 14-21)*

	Weekly Course Fees	Transfers	Total Fees Excluding Transfers
15 hours/week	£920 x 2	Not included	£1840 for 2 weeks
15 hours/week	£920 x 3	Not included	£2760 for 3 weeks

### *Summer 2:1 fees per person (ages 12-13)*

	Weekly Course Fees	Transfers	Total Fees Excluding Transfers
15 hours/week	£1130 x 2	Not included	£2260 for 2 weeks
15 hours/week	£1130 x 3	Not included	£3390 for 3 weeks

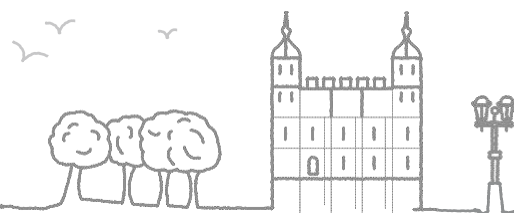
*Airport:* Any UK airport

*English Level:* Elementary to Upper Intermediate

*Transfers:* Shared or individual transfers depending on location of teacher and flight time of partner – transfer fees will be advised with your teacher proposal

*Excursions (14-21):* Fees are included for all local excursions  
2 weeks: 4 afternoons and 1 day trip; 3 weeks: 6 afternoons and 2 day trips

*Excursions (12-13):* Fees are included for all local excursions as above and daily activities in the home such as baking, craft and projects on non-excursion days.





### Course Fees Include:

- 2:1 tuition (15 hours), designed to meet your needs
- individual assessment at the start of the course
- study bedroom in your teacher's home
- all study materials – student workbook
- Living Learning English student pack
- progress report and recommendations for future study
- certificate of attendance
- full board: breakfast, lunch and dinner with your teacher
- accompanied LOCAL excursions
- 24-hour support from Living Learning English staff
- comprehensive travel insurance

### Course Fees Do Not Include:

- travel to/from the UK
- airport transfers
- visa fees (express mail)

66 *My experience with LLE was fantastic! My homestay was brilliant, my family was perfect! I got on very well with my teacher and partner and we still keep in touch* ∞∞



### Booking

To book a course please send:

1. The **completed booking form**
2. The **Initial Assessment**
3. A **deposit of £200 per student**

DEPOSIT: The deposit is part of the total fees due. The deposit is necessary to reserve your teacher and course.

PAYMENT OF FEES: Full payment of fees must be paid not later than four weeks before the course starts. If you make a late booking, full payment must be made immediately.

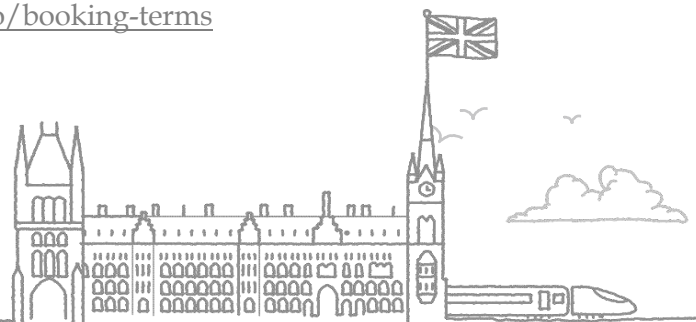
### Payments can be made by:

1. Credit card on our website:
2. International Money Transfer to: LIVING LEARNING ENGLISH LTD ACCOUNT  
NO. 21635072  
SORT CODE 56-00-05  
NATWEST BANK, PO BOX 238,  
32 Corn Street, Bristol BS99 7UG  
IBAN: GB63 NWBK 5600 0521 635072  
BIC: NWBK GB 2L

NB: All bank charges must be paid by the student's own bank.

### Terms and Conditions:

<https://www.livingenglish.com/booking-info/booking-terms>



## Activities and Excursions

*Fees are included in all our Young Learners courses for all local excursions.*

*On a Young Learners course, your child will have a social programme tailored to theirs and their partner's interests. Specially suited, fully supervised activities are undertaken with the teacher in the local area.*

### *Visits to Local Places of Interest*

Your teacher will be able to take you to visit local cities, where you will be able to do some sightseeing and souvenir shopping.

Depending on location, you may be able to visit famous British landmarks, beaches, museums country houses and castles.

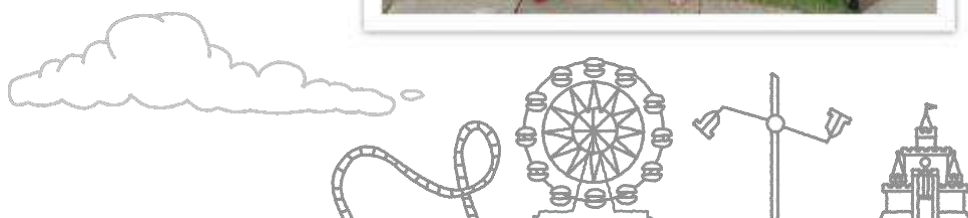
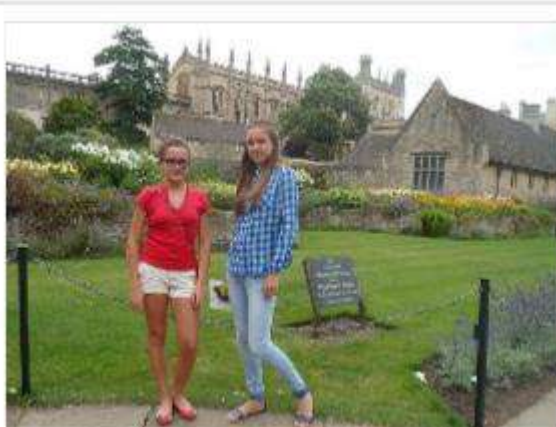
### *Sports*

If you enjoy sports, it may be possible for you to visit the local sports centre; where you can swim, play racquet sports with your partner or maybe even go rock climbing or try some water sports. You may also be able to hire a bike.

Please discuss this with your teacher and they will be happy to arrange sports activities in their local area. Please note that expensive sports like horse-riding and golf are not included in the excursions package.

### *Activities in the Local area*

Your teacher will be able to let you know what activities are available in the local area. These may include a visit to the cinema or zoo, a game of bowling or mini golf or a visit to an arts and crafts centre.





**Antoine, 16, France and  
Leonardo, 15, Italy**



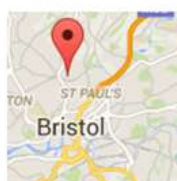
*Antoine and Leonardo were matched on our Summer 2:1 Programme. It was their first course with LLE, with their teacher Chris, who lives in Bristol.*

**What did you enjoy the most about staying in Bristol?**

I enjoyed our free time activities; for example we went to the beach and went climbing at the local bouldering centre. We played a lot of table tennis at Chris' house. (Antoine)

**Did you enjoy your English lessons with Chris?**

Yes – I think in these two weeks I have improved my English a lot, but also my confidence in my speaking. (Leonardo)



*Chris, their teacher, says: "They had a lot of fun together and really improved their English – plus they got to have a break from the teacher and go off and enjoy things on their own."*



**Colette, 13, France and  
Neus, 13, Spain**



*Neus and Colette were matched on our Summer 2:1 programme. They both really enjoyed the LLE experience and still keep in contact now the course has finished.*

**What is the best thing about a homestay course?**

The best thing is the way that our host family treats us, it is like we are part of their family. Their cooking is great too! (Neus)

**What area of your English did you improve the most?**

I think everything was very useful and the books and workbook were very well explained and easy to understand. (Colette)



*Shan, their teacher, says: "The girls were a perfect match and we had a great three weeks together! They shared lots of common interests and both were motivated to improve their English. We have had a lot of fun with them!"*





**Elena, 14, Spain  
and Eloise, 15, France**

*Elena and Eloise were matched on our Summer 2:1 programme. They said they had an 'unforgettable' experience with their teacher Pam, who lives in Kent.*

**What did you enjoy the most about staying with Pam?**

She was really caring and always had lots of ideas for activities for me and Elena, like swimming, baking and films. (Eloise)

**Which lesson did you enjoy the most?**

On the third day we did a project about Henry VIII because in the afternoon we were going to visit his castle. It was interesting to learn about British History! (Elena)



*Pam, their teacher, says. 'Elena and Eloise integrated well into the house and UK culture, even though it was their first visit to England! I wish them both the best for their futures.'*





“ I learned more in two weeks with my teacher at home than in six weeks at a school. ”



[www.livingenglish.com](http://www.livingenglish.com)

TOTAL IMMERSION IN THE ENGLISH LANGUAGE

27 Portland Square, Bristol BS2 8S/ • T: +44 (0) 117 926940 • Skype: livinglearningenglish • E: [info@livingenglish.com](mailto:info@livingenglish.com)

